

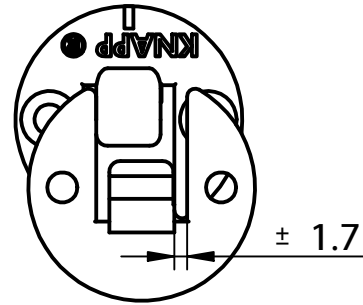
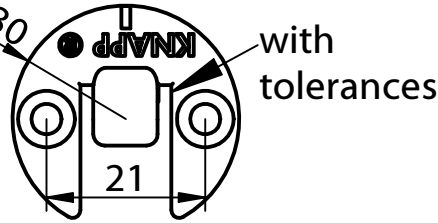
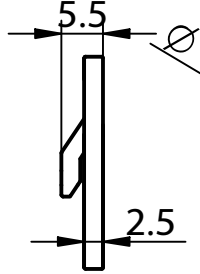
Instruction Manual

DUO 30 ml

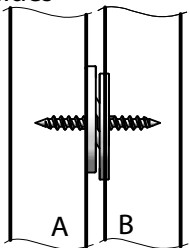
Art.-No. K070

Hook connector

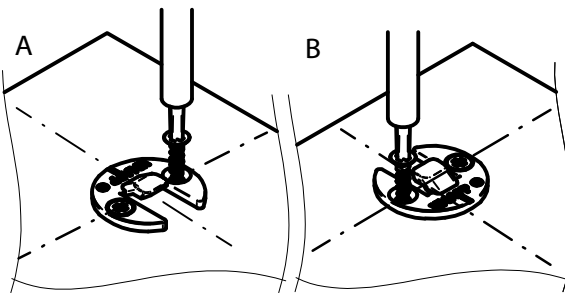
DUO 30 ml blue zinc-plated



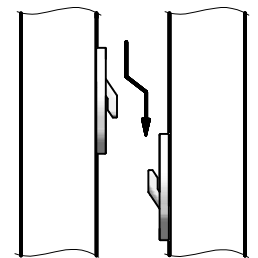
screw on both sides



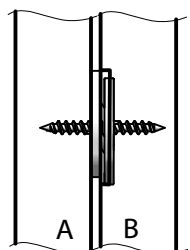
1. Screwing



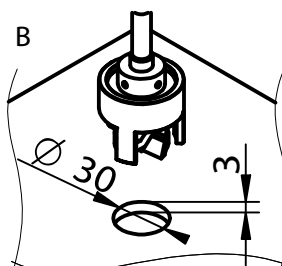
2. To connect



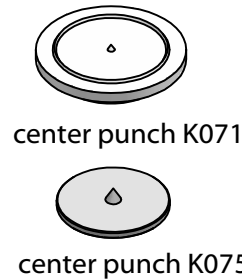
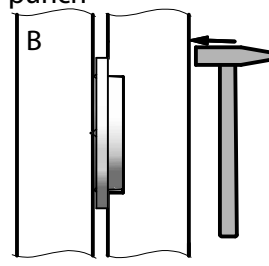
drill on one side



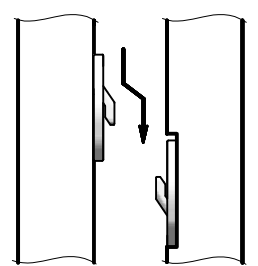
1. Drilling



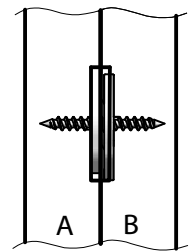
2. Copy with center punch



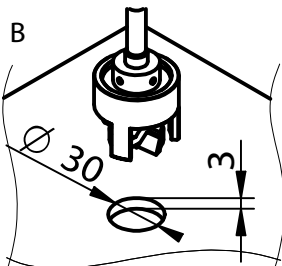
3. Screwing and connect



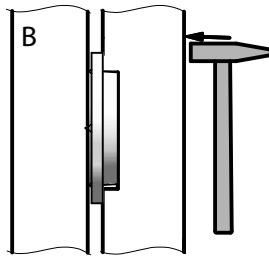
drill on both sides



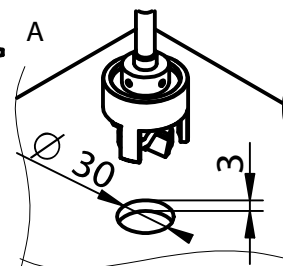
1. Drilling



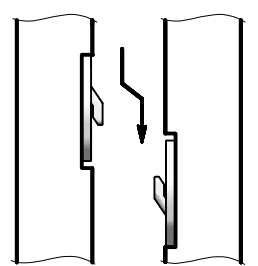
2. Copy



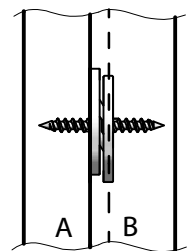
3. Drilling



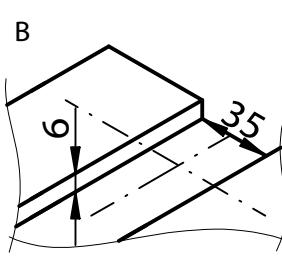
4. Screwing and connect



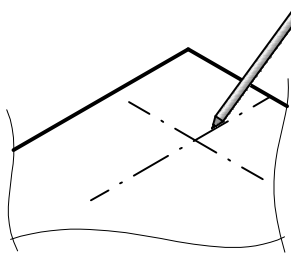
groove on one side



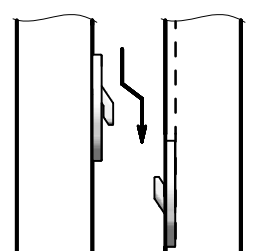
1. Grooving



2. Copy

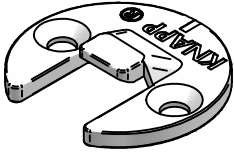


3. Screwing and connect



This drawing is the exclusive property of Knapp GmbH.

© Knapp GmbH. All measures in mm - Errors excepted. VERSION 02 08.09.2014



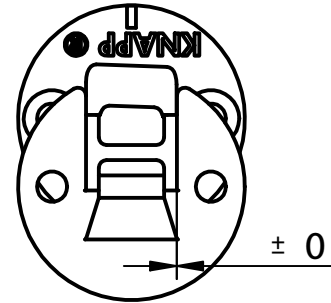
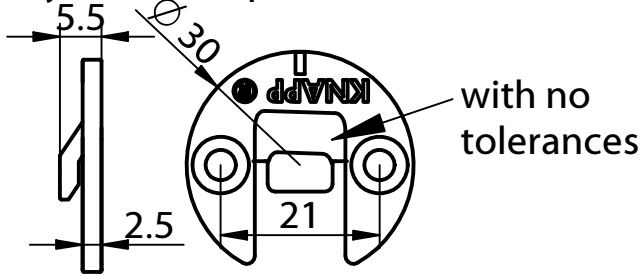
Construction Manual

DUO 30 ol

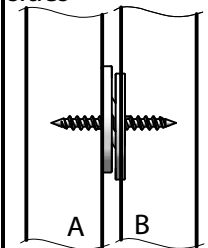
Art.-No. K074

Hook connector

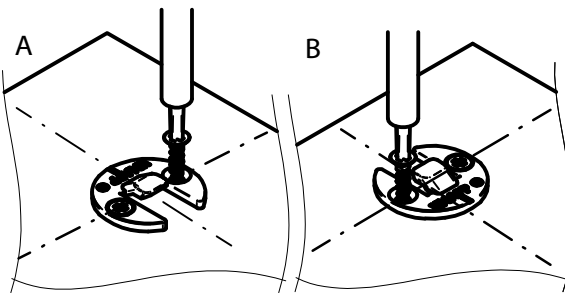
DUO 30 ol yellow zinc-plated



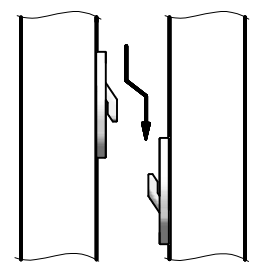
screw on both sides



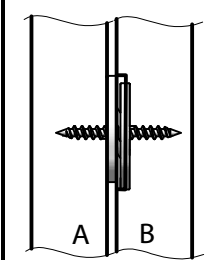
1. Screwing



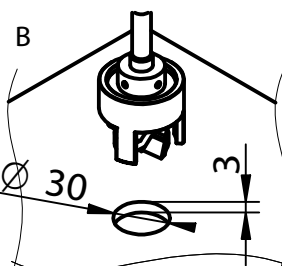
2. To connect



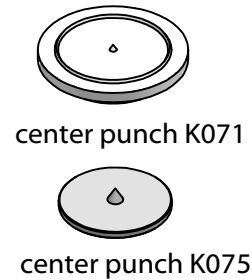
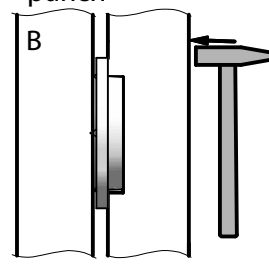
drill on one side



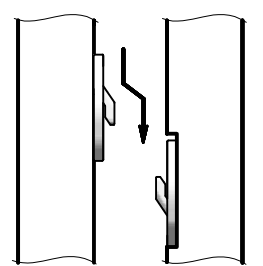
1. Drilling



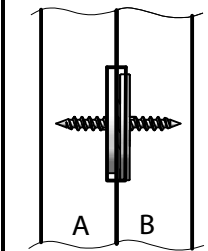
2. Copy with center punch



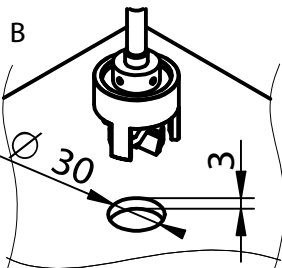
3. Screwing and connect



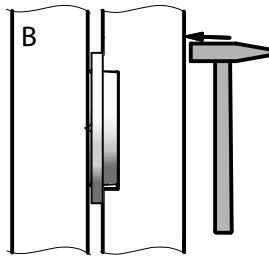
drill on both sides



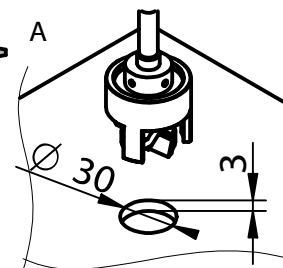
1. Drilling



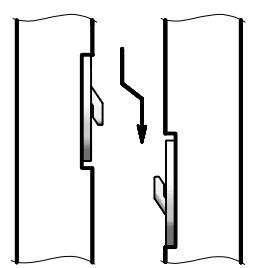
2. Copy



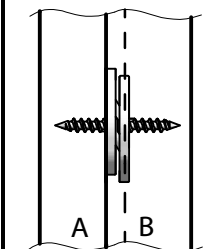
3. Drilling



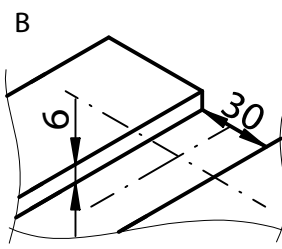
4. Screwing and connect



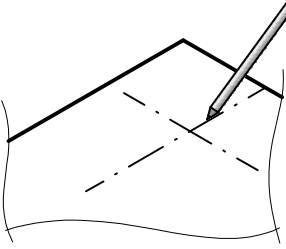
groove on one side



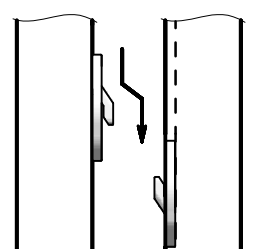
1. Grooving



2. Copy

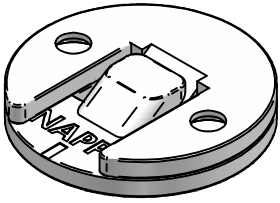


3. Screwing and connect



This drawing is the exclusive property of Knapp GmbH.

© Knapp GmbH. All measures in mm - Errors excepted. VERSION 02 08.09.2014

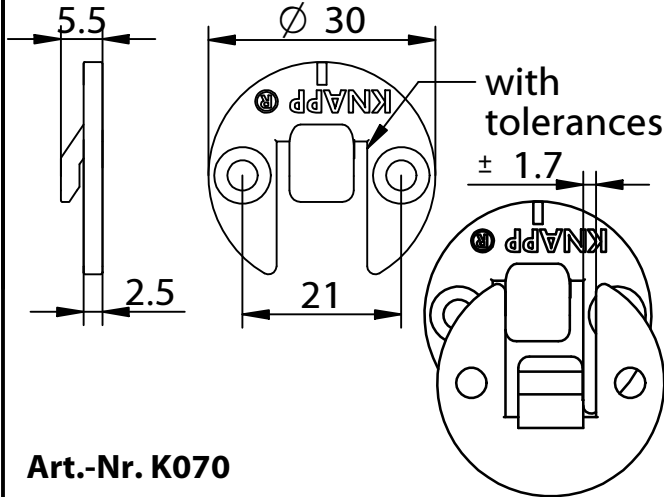


Construction Manual

DUO 30 ml/ol

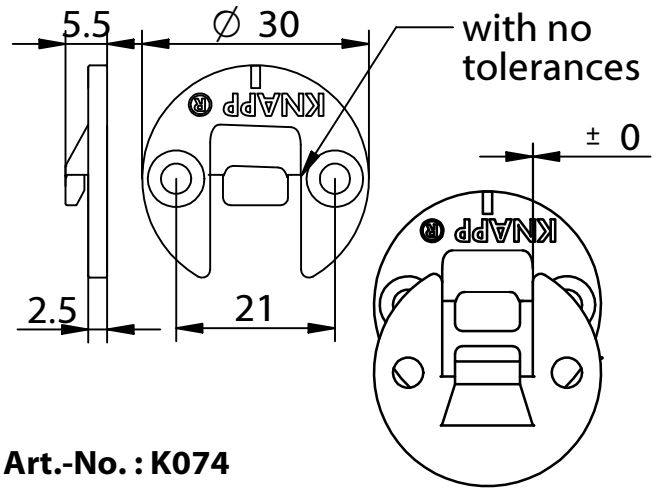
Hook connector

DUO 30 ml blue zinc-plated



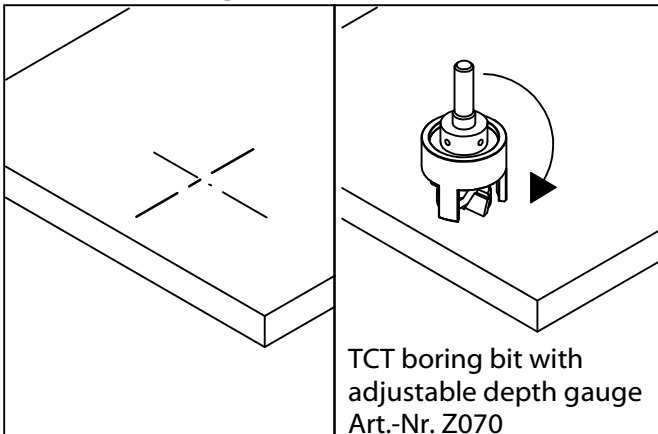
Art.-Nr. K070

DUO 30 ol yellow zinc-plated



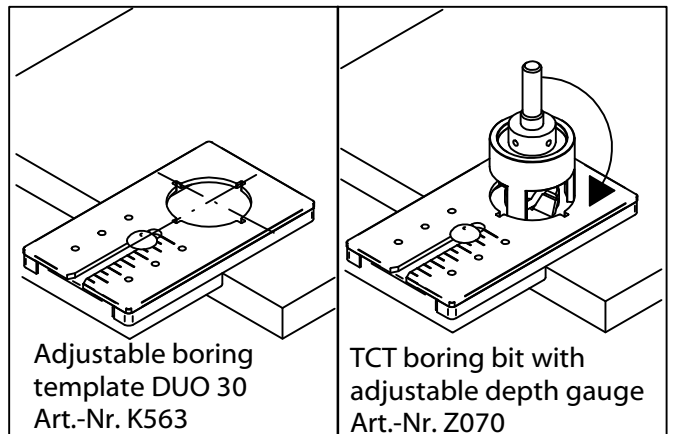
Art.-No. : K074

1. DUO 30 drilling (3 mm depth) according to mark



TCT boring bit with adjustable depth gauge
Art.-Nr. Z070

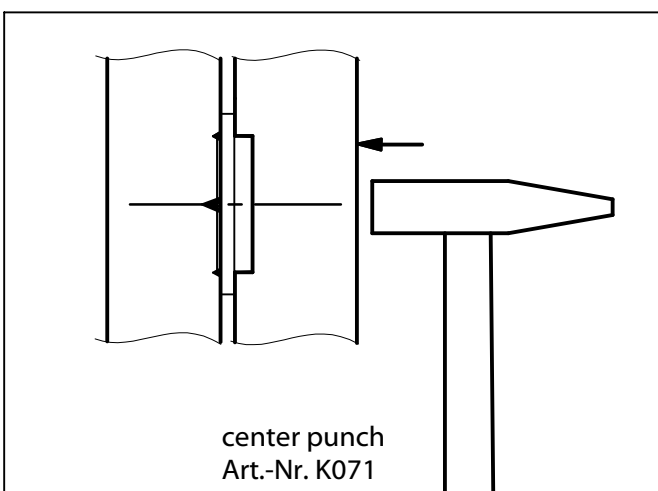
1. Adjust the drilling jig and drilling 3 mm depth



Adjustable boring template DUO 30
Art.-Nr. K563

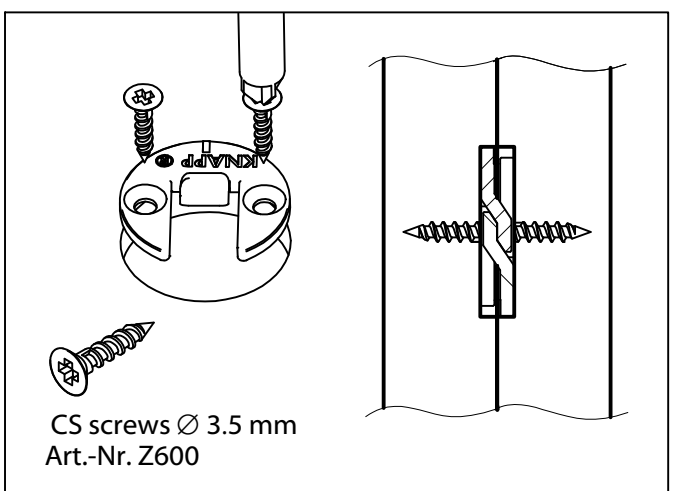
TCT boring bit with adjustable depth gauge
Art.-Nr. Z070

2. Copy with center punch

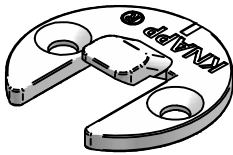


center punch
Art.-Nr. K071

3. Screwing and connect



CS screws \varnothing 3.5 mm
Art.-Nr. Z600



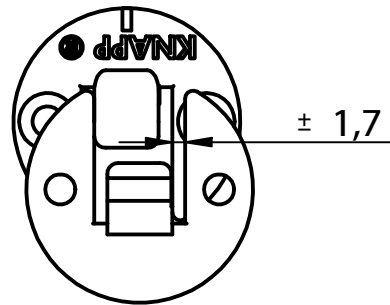
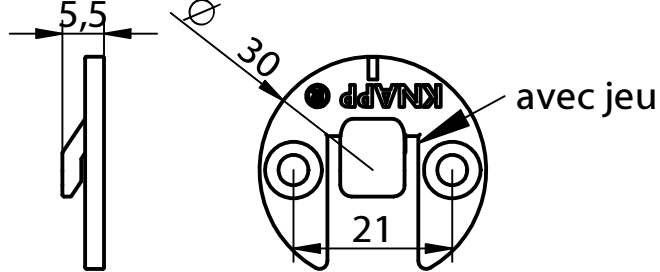
Notice de montage

DUO 30 ml

Réf. K070

Connecteur d'accroche

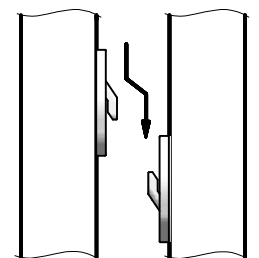
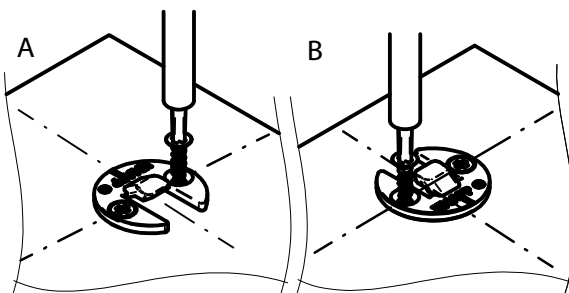
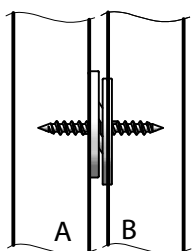
DUO 30 ml zingué bleu



VARIANTE A

1. Visser

2. Accrocher

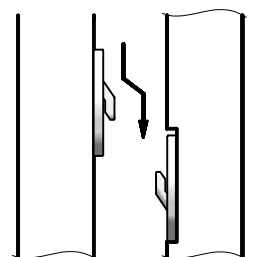
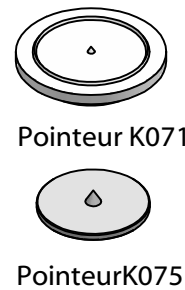
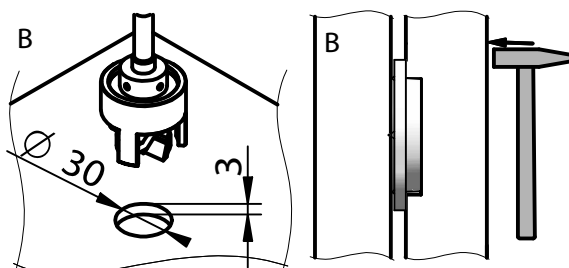
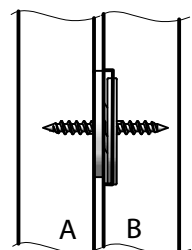


VARIANTE B

1. Percer

2. Pointer

3. Visser et accrocher



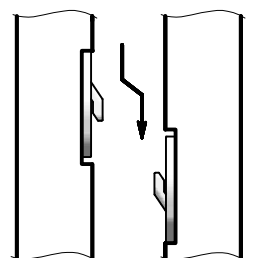
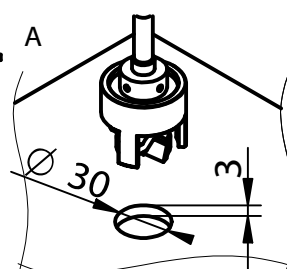
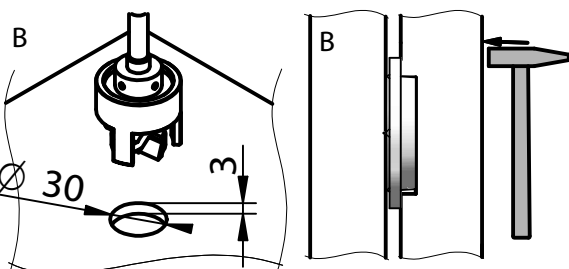
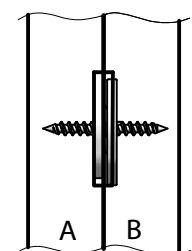
VARIANTE C

1. Percer

2. Pointer

3. Percer

4. Visser et accrocher

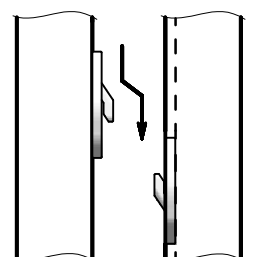
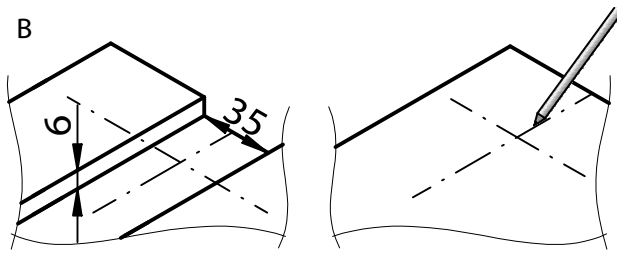
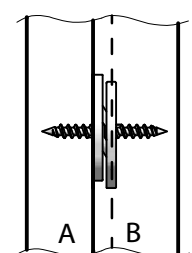


VARIANTE D

1. Rainurer

2. Pointer

3. Visser et accrocher



Ce dessin est la propriété de Knapp GmbH.

© Knapp GmbH. Toutes dimensions en mm - sauf erreurs, fautes d'impression ou modifications techniques. VERSION 02 08. 09. 2014



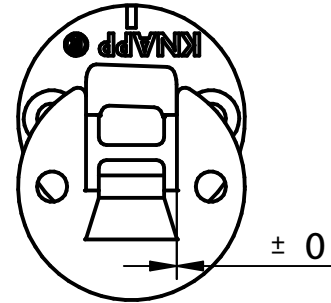
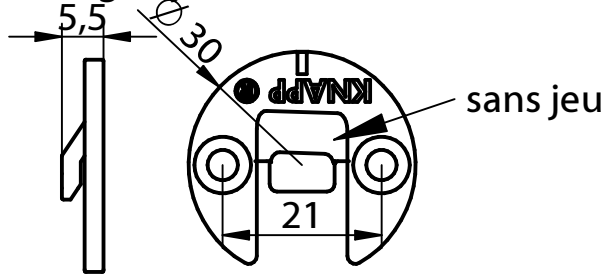
Notice de montage

DUO 30 ol

Réf. K074

Connecteur d'accroche

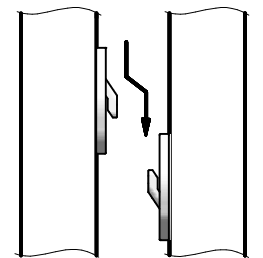
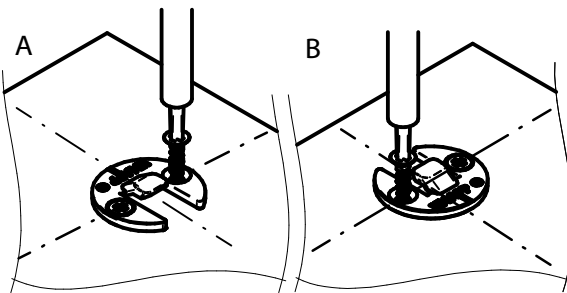
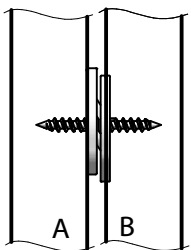
DUO 30 ol zingué jaune



VARIANTE A

1. Visser

2. Accrocher

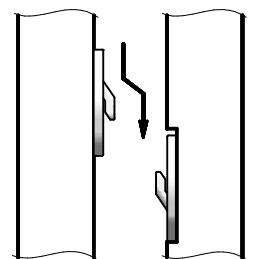
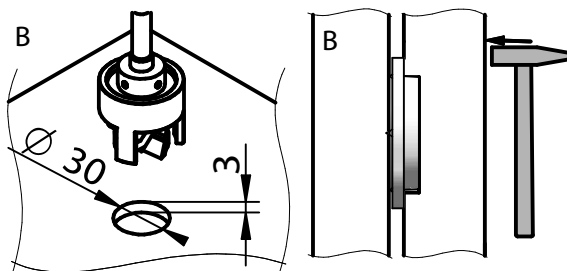
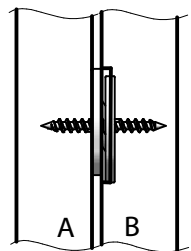


VARIANTE B

1. Percer

2. Pointer

3. Visser et accrocher



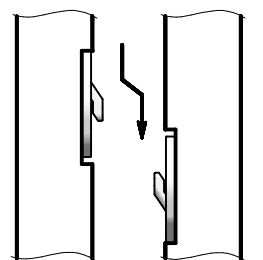
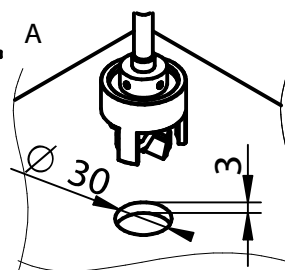
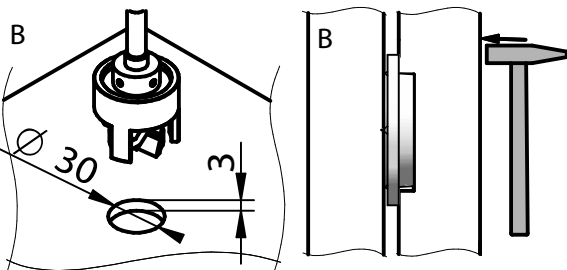
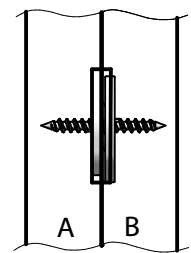
VARIANTE C

1. Percer

2. Pointer

3. Percer

4. Visser et accrocher

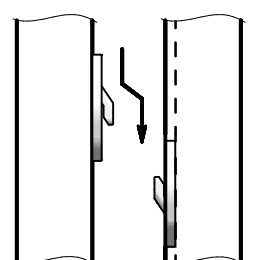
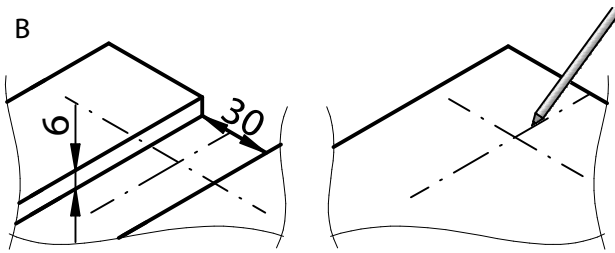
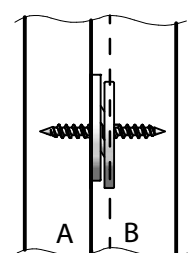


VARIANTE D

1. Rainurer

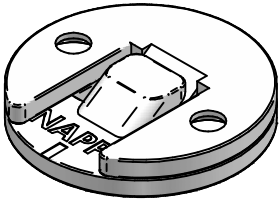
2. Pointer

3. Visser et accrocher



Ce dessin est la propriété de Knapp GmbH.

© Knapp GmbH. Toutes dimensions en mm - sauf erreurs, fautes d'impression ou modifications techniques. VERSION 02 08. 09. 2014

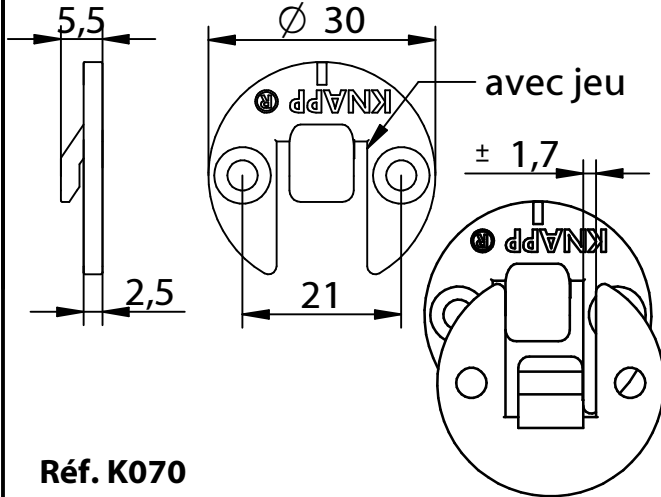


Notice de montage

DUO 30 ml/ol

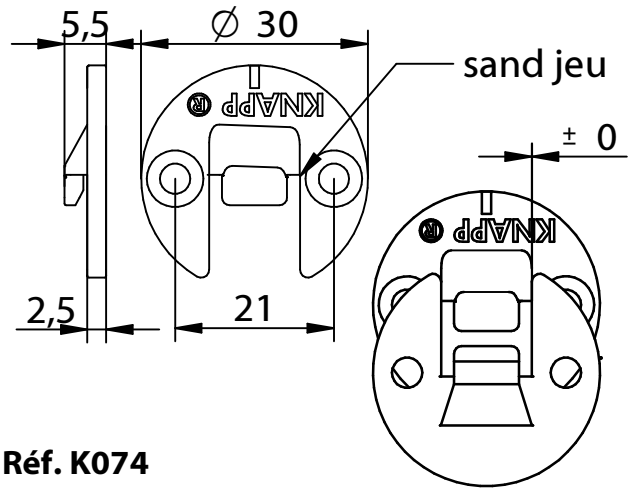
Connecteur d'accroche

DUO 30 ml zingué bleu



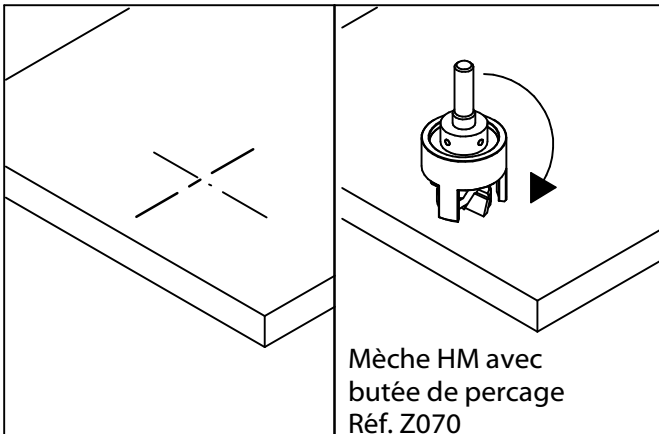
Réf. K070

DUO 30 ol zingué jaune

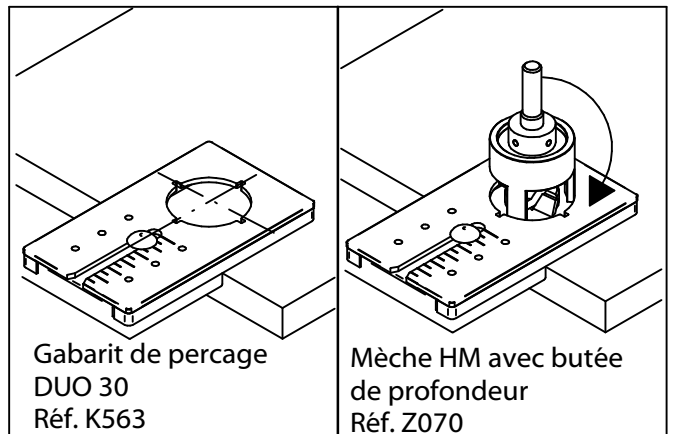


Réf. K074

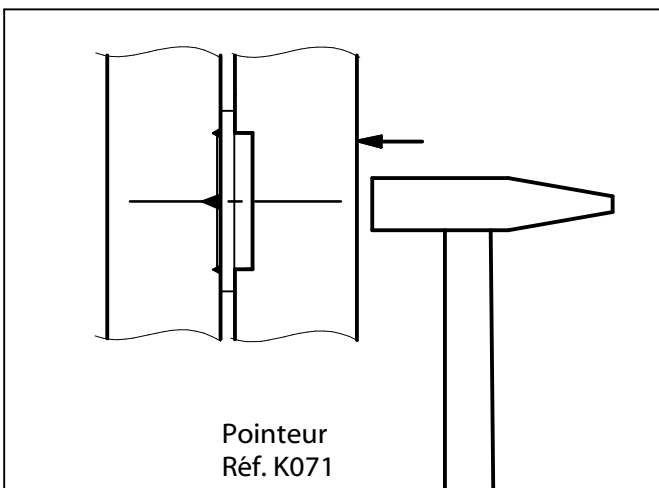
1. Définir la position de DUO 30 et percer à 3 mm de profondeur



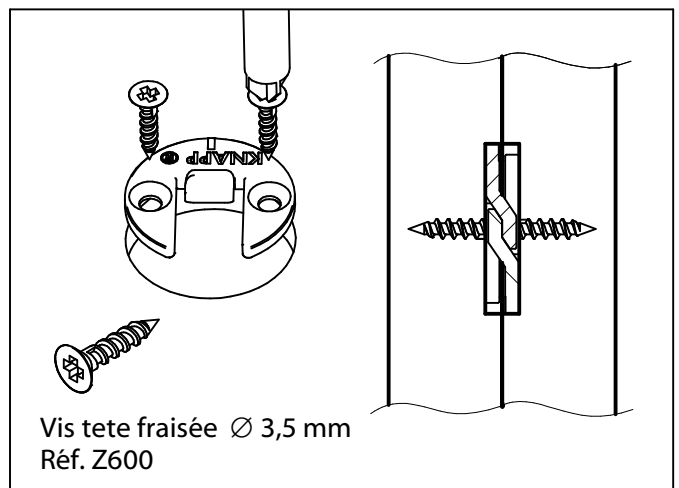
1. Régler le gabarit et percer à 3 mm de profondeur

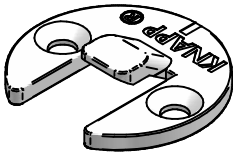


2. Pointer la pièce opposée



3. Visser et emboîter



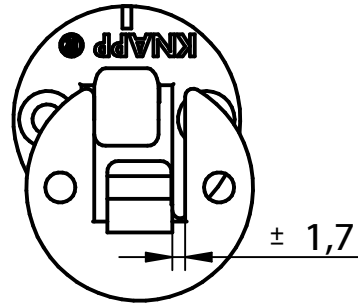
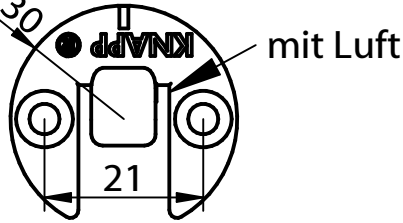
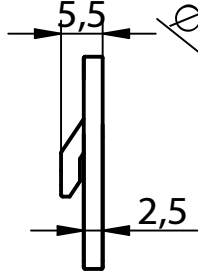


Montageanleitung DUO 30 ml

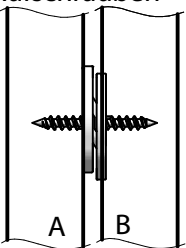
Einhängeverbinder

Art.-Nr. K070

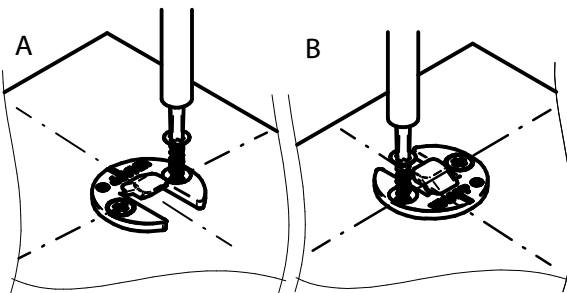
DUO 30 ml blau verzinkt



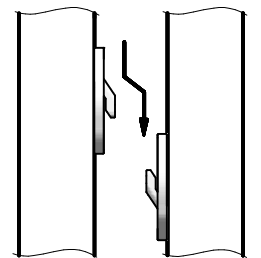
Beidseitig
Aufschrauben



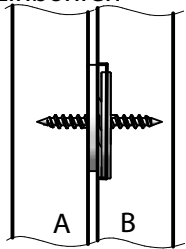
1. Aufschrauben



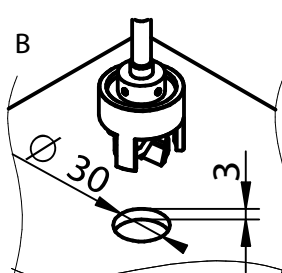
2. Einhängen



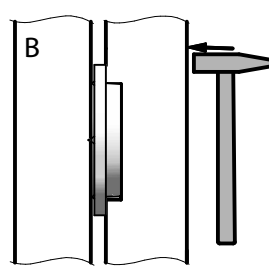
Einseitig
Einbohren



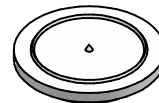
1. Bohren



2. Übertragen



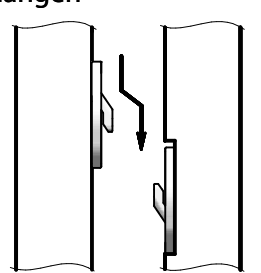
3. Einschrauben und
Einhängen



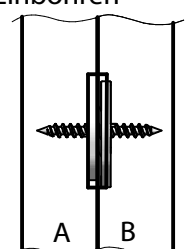
Körner K071



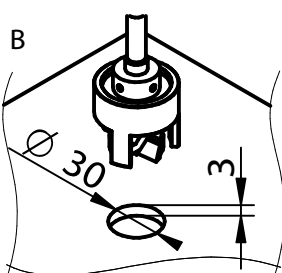
Körner K075



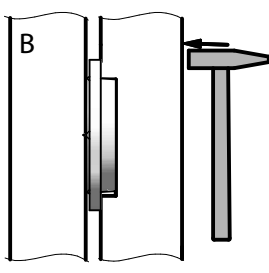
Beidseitig
Einbohren



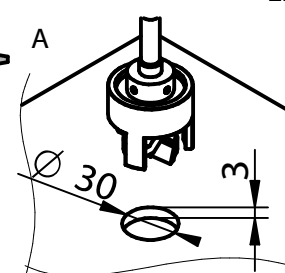
1. Bohren



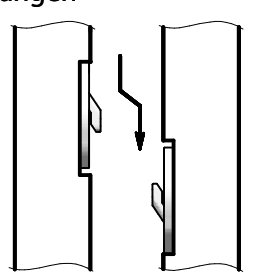
2. Übertragen



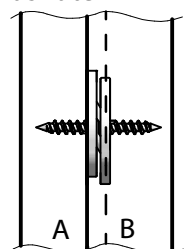
3. Bohren



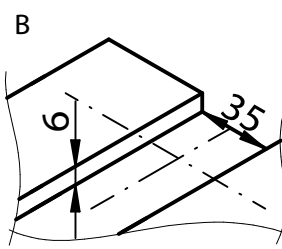
4. Einschrauben und
Einhängen



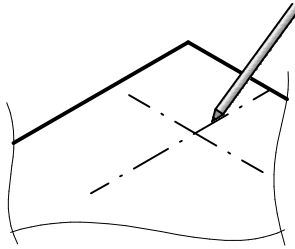
Einseitig
Ausnuten



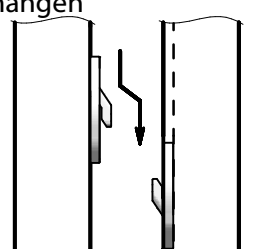
1. Nuten



2. Übertragen

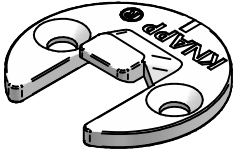


3. Einschrauben und
Einhängen



Diese Zeichnung ist Eigentum der Knapp GmbH.

© Knapp GmbH. Alle Maße in mm - Irrtümer, Druckfehler und Änderungen vorbehalten. VERSION 02 08.09.2014

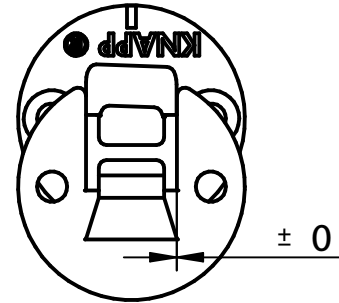
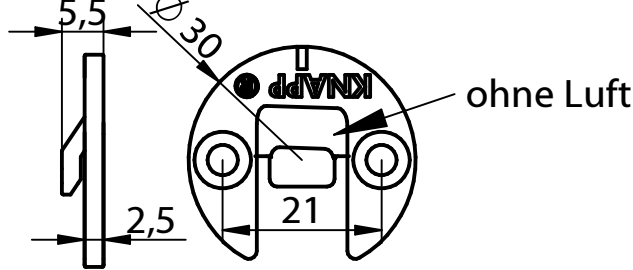


Montageanleitung DUO 30 ol

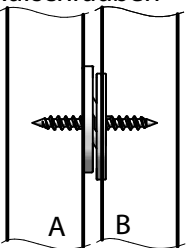
Einhängeverbinder

Art.-Nr. K074

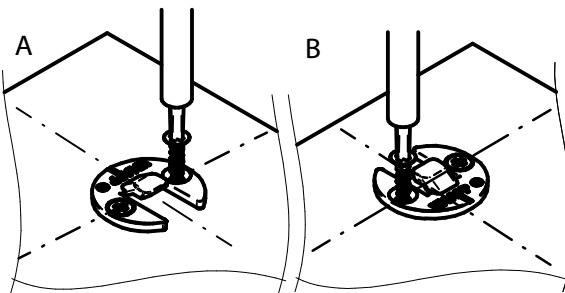
DUO 30 ol gelb verzinkt



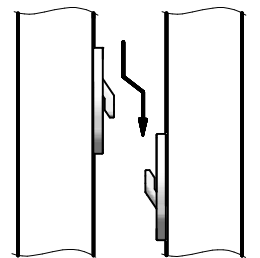
Beidseitig
Aufschrauben



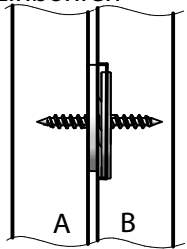
1. Aufschrauben



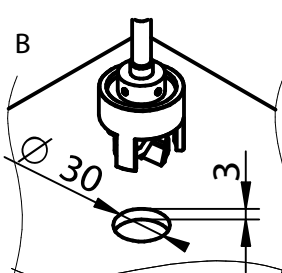
2. Einhängen



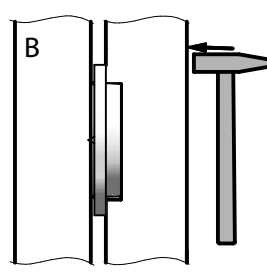
Einseitig
Einbohren



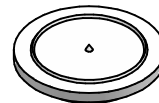
1. Bohren



2. Übertragen



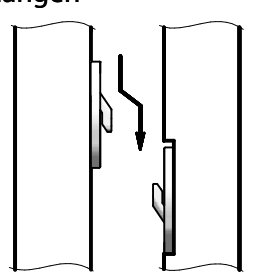
3. Einschrauben und
Einhängen



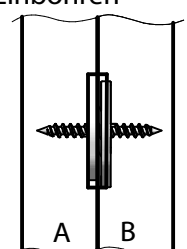
Körner K071



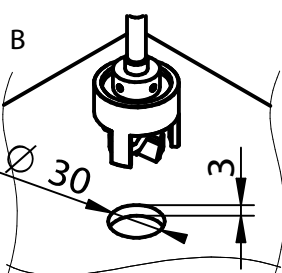
Körner K075



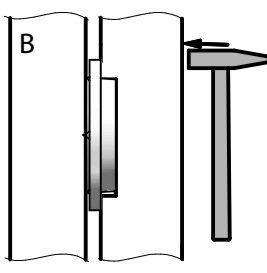
Beidseitig
Einbohren



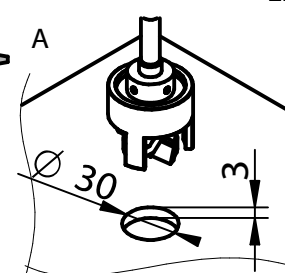
1. Bohren



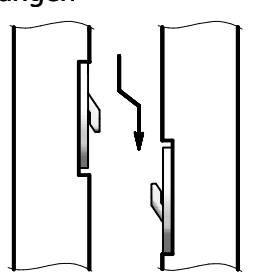
2. Übertragen



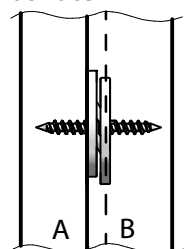
3. Bohren



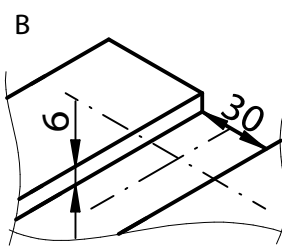
4. Einschrauben und
Einhängen



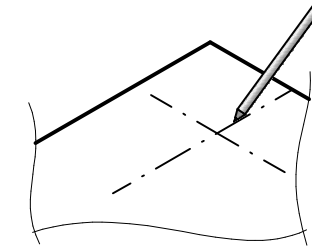
Einseitig
Ausnuten



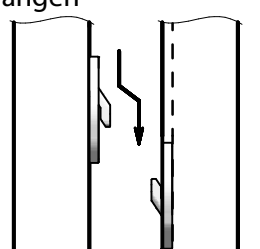
1. Nuten



2. Übertragen

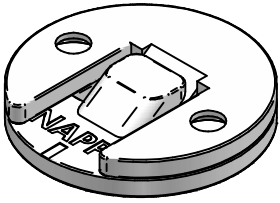


3. Einschrauben und
Einhängen



Diese Zeichnung ist Eigentum der Knapp GmbH.

© Knapp GmbH. Alle Maße in mm - Irrtümer, Druckfehler und Änderungen vorbehalten. VERSION 02 08.09.2014

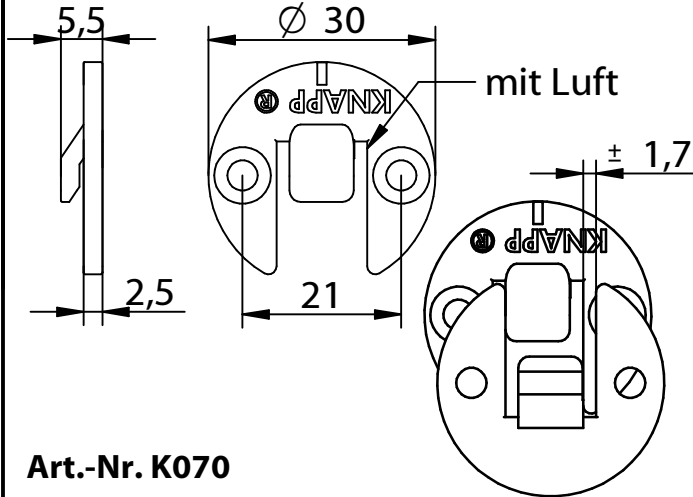


Montageanleitung

DUO 30 ml/ol

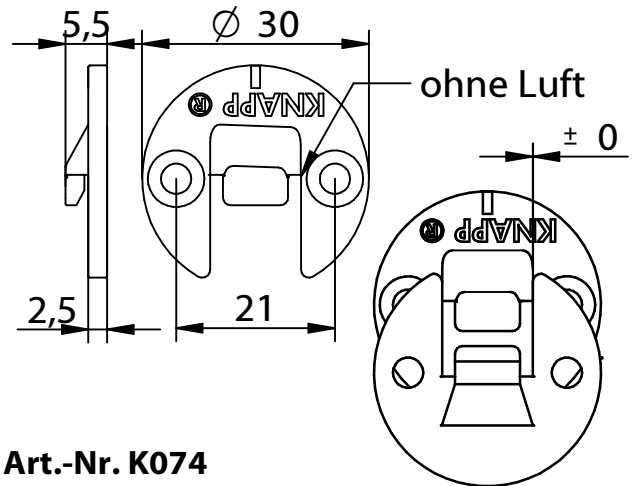
Einhängeverbinder

DUO 30 ml blau verzinkt



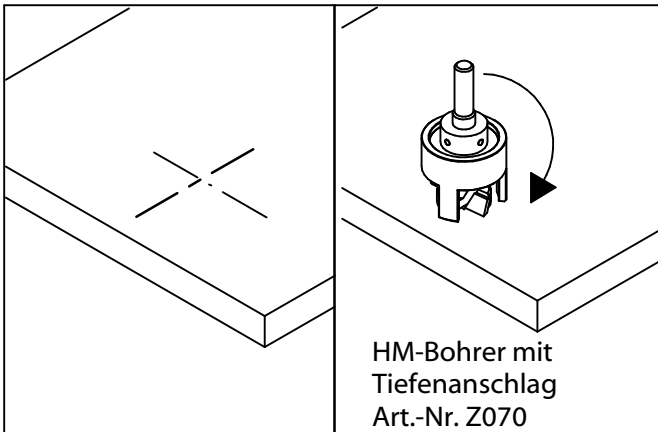
Art.-Nr. K070

DUO 30 ol gelb verzinkt



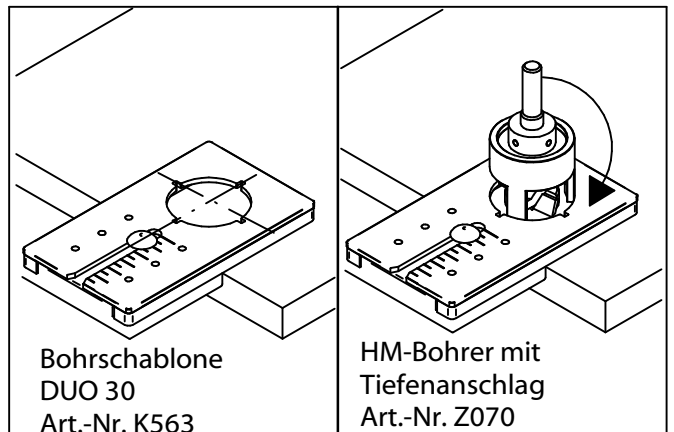
Art.-Nr. K074

1. DUO 30 auf Maß anreißen und 3 mm tief bohren



HM-Bohrer mit
Tiefenanschlag
Art.-Nr. Z070

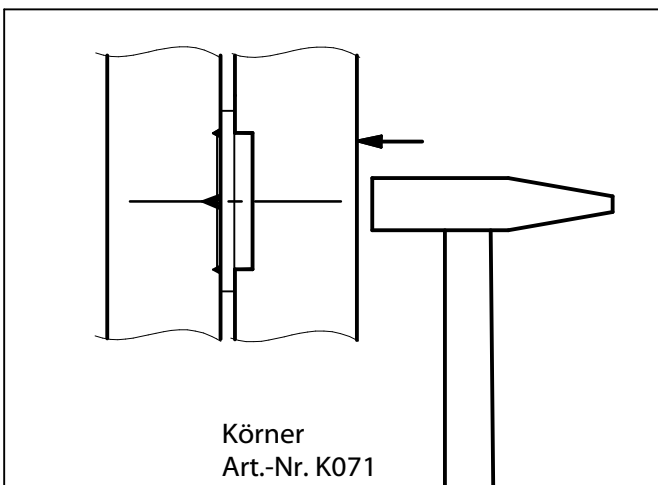
1. Bohrschablone auf Maß einstellen und 3 mm tief bohren



Bohrschablone
DUO 30
Art.-Nr. K563

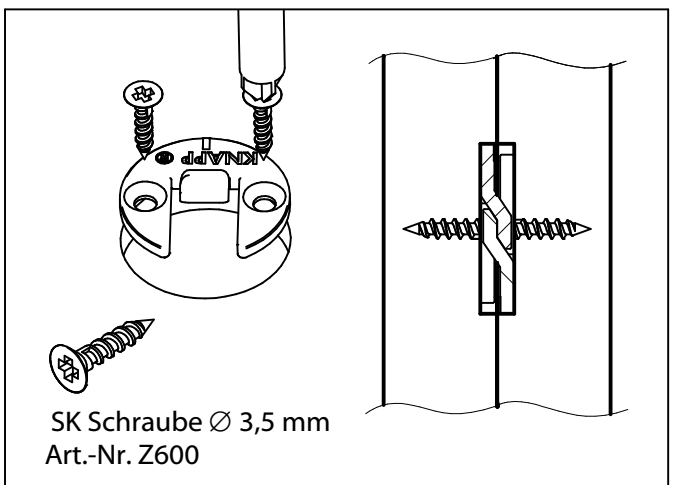
HM-Bohrer mit
Tiefenanschlag
Art.-Nr. Z070

2. Gegenstück kornen



Körner
Art.-Nr. K071

3. Einschrauben und Einhängen



SK Schraube \varnothing 3,5 mm
Art.-Nr. Z600