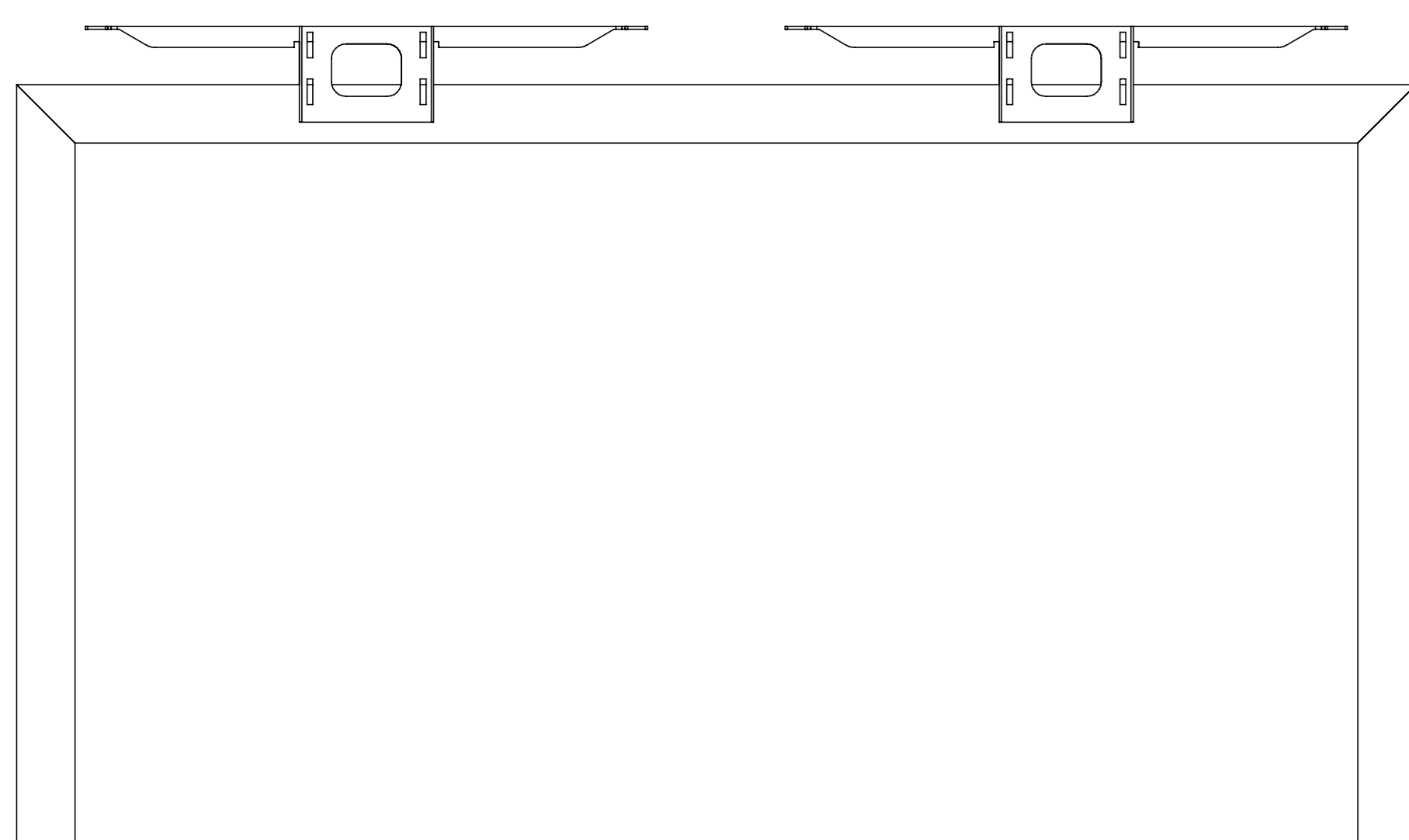
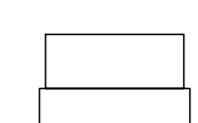


**A** stelaż biurka podwójny x 2 szt | double steel legs x 2 pcs



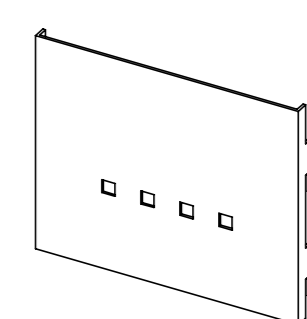
**B** wkładka x 4 szt | insert x 4 pcs



**C** regulator x 4 szt | adjustable feet x 4 pcs



**D** osłonka głowicy x 4 szt | top cover x 4 pcs



**E** wkręt x 24 szt | sharp screw x 24 pcs



potrzebne narzędzia | necessary tools



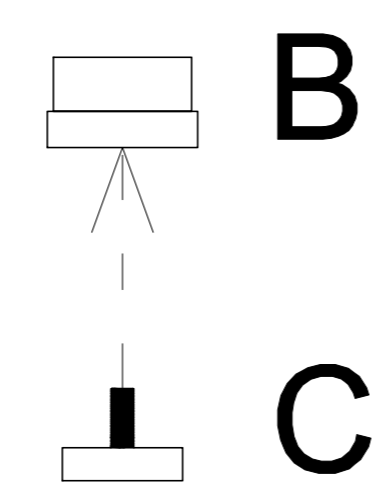
# INSTRUKCJA MONTAŻU | ASSEMBLY INSTRUCTION

## Q 7312, Q 7314, Q 7316

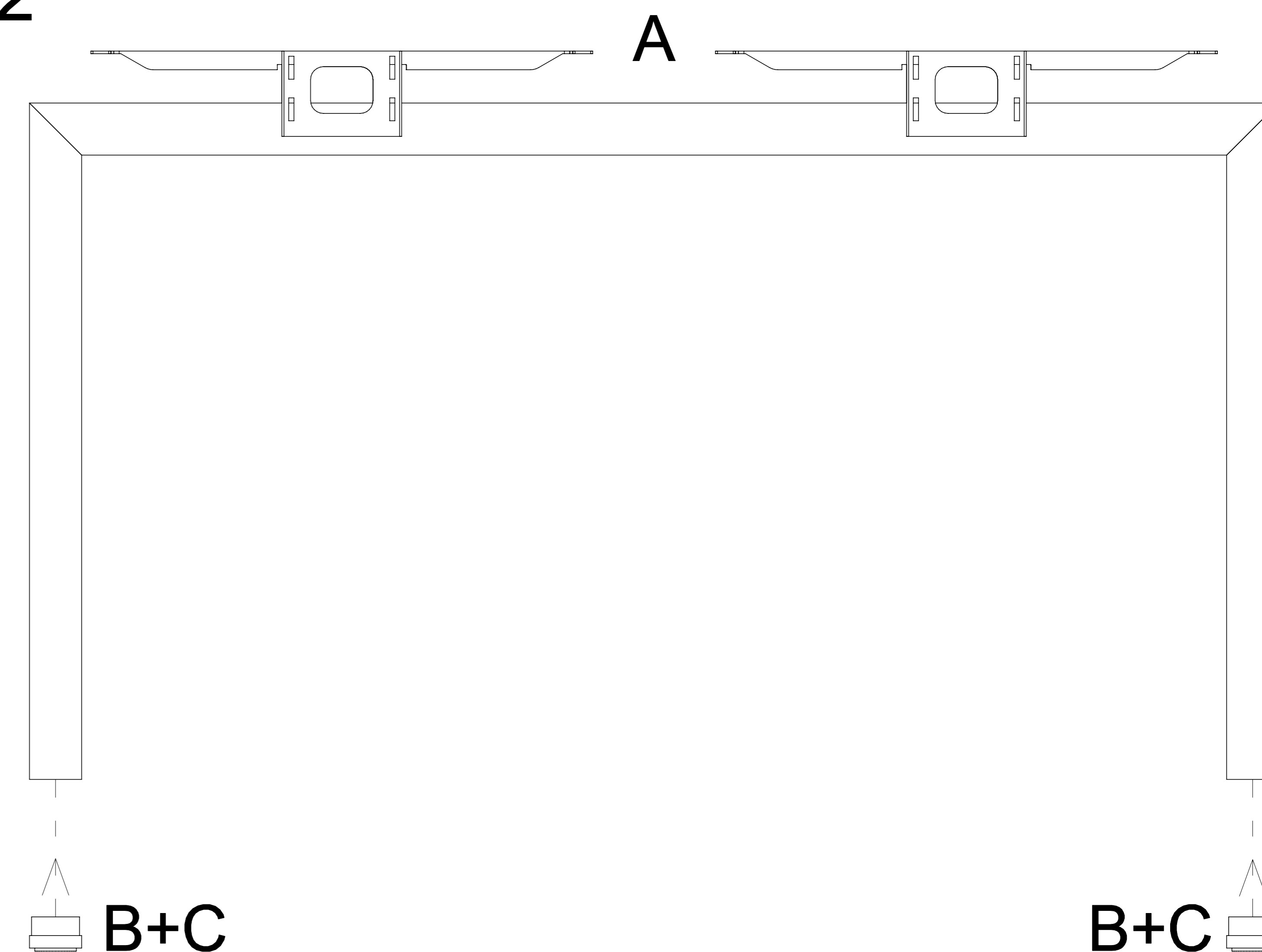


2019.06

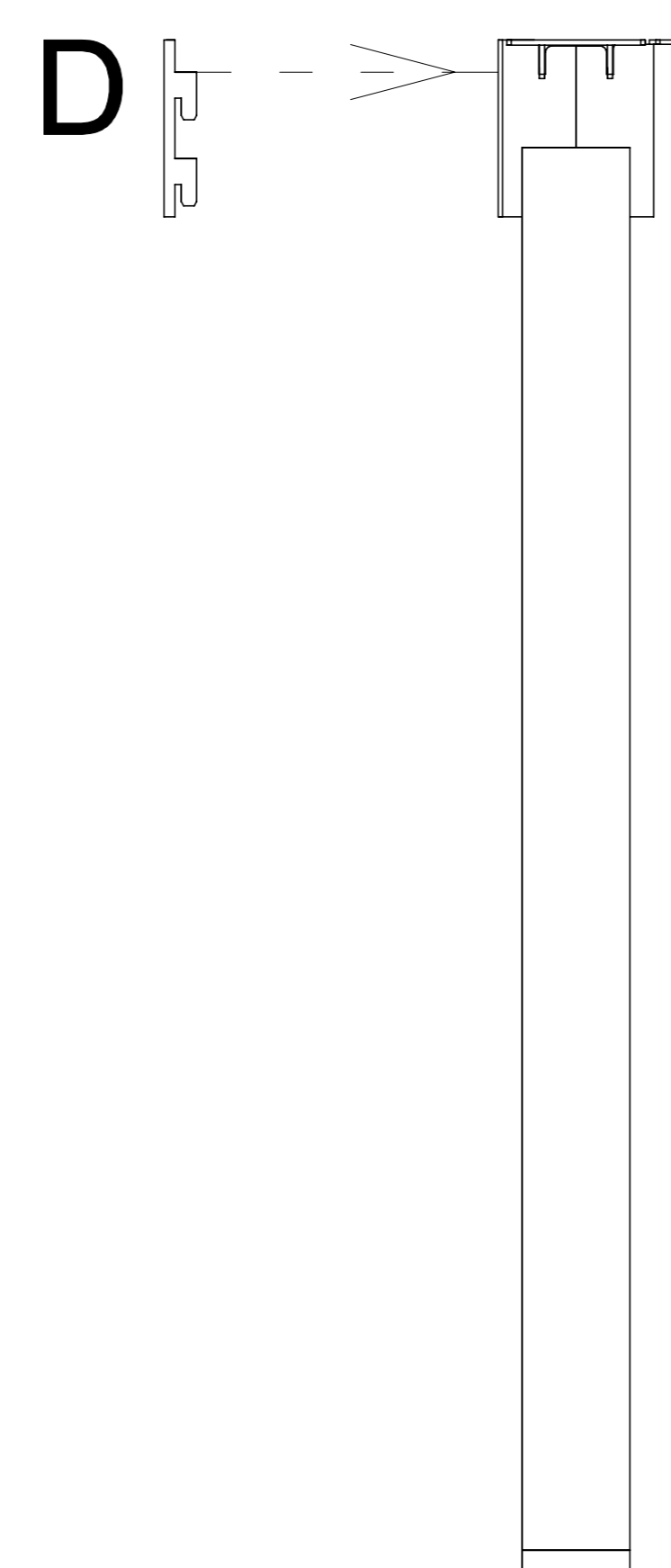
1



2



3



4

